

ELECTRICITY FROM BIOMASS

custom-made solution for energy supply with steam technology

CHP-plant with fuel wood chips

Our plant sizes:

SINGLE STEAM

from **150 kW** total power up
delivers up to **30 kW** green electricity
and \approx **110 kW** green heat

DOUBLE STEAM

from **300 kW** total power up
delivers up to **60 kW** green electricity
and \approx **220 kW** green heat

or a multiple of these capacities with combined systems

**Efficient biomass combustion
with modern push grate technology**



Fördertechnik Ges.m.b.H.

A-2620 Natschbach-Loipersbach, Guntramser Straße 229

T +43 2635 61 991 - F +43 2635 61 991 - 30

office@vep.at



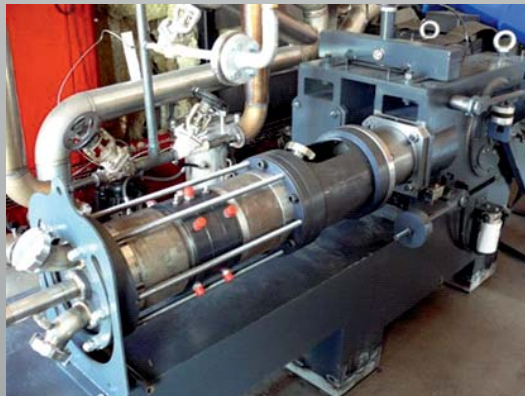
www.vep.at

ELECTRICITY FROM BIOMASS

with our calorific small power plant for generation of green electricity and local heat

Hi-tech steam generator **GREEN STEAM 150**

Max. steam temperature $\approx 450^{\circ}\text{C}$
Max. operating pressure **32 bar**
Steam output $\approx 200\text{ kg/h}$



NEUMOT – steam expansion motor for conversion of thermal into electrical energy

